

**University of Bristol**

**An information guide to  
accompany the artwork  
displayed in the communal  
areas of Principal's House.**

**International Research  
Development**



## International Research Development

Principal's House is a facility used primarily to house international visitors to the University of Bristol via the International Research Development schemes. As part of our mission to enhance and maximise the visitor experience we are in the process of curating a collection of images, artworks and signage for the communal spaces in Principal's House. Our aim is to represent a broad spectrum of subject areas relating to the University and the city of Bristol from its past, present and hopes for the future.

The artwork displayed on the entrance hall wall of Principal's House are copies of originals held by the University of Bristol's Theatre Collection and Special Collections, more information and contact details for both of these Collections can be viewed at the back of this guide.

We are continuing to build on this initial collection and are actively sourcing a range of other artworks and visuals to be displayed in other communal areas of the building.

Each artwork is represented by a number located next to the picture, you will find more information about each image in this guide.

There are also some prints of Bristol displayed these are by local artists Susie Ramsay and Chris Dye.

We hope you find them interesting!

The International Research Development team would like to thank Archive Assistant Athene Bain from the Theatre Collection for her assistance in curating the collection and the Director of the Theatre Collection Jo Elsworth for facilitating this collaboration and Special Collections for their assistance with sourcing images.

Contact us:



**[bristol.ac.uk/international-research-development](https://bristol.ac.uk/international-research-development)**  
email: [ird-office@bristol.ac.uk](mailto:ird-office@bristol.ac.uk)

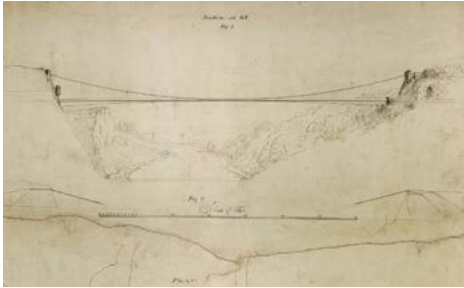




**1**

**Colour watercolour showing the Bristol Baptist College, proposed new building in Tyndall's Park, by A.C. Fair, created for the architects Oatley and Lawrence, c. November 1913, University of Bristol Special Collections**

Reference: DMDM2631/2



**2**

**One of four drawings for a proposed suspension bridge across the River Avon, in Clifton, signed I.K. Brunel and dated 19 November 1829.** The drawings were submitted by Isambard Kingdom Brunel to the Committee of the Society of Merchant Venturers of Bristol, in the first competition to choose a bridge, c.1829. Brunel Collection, University of Bristol Special Collections

Reference: DM1761



**3**

**Engraving depicting Hannah More (1745-1833), author, poet, playwright, philanthropist, educator, anti-slavery campaigner.** Fry Portrait Collection, University of Bristol Special Collections

Reference: SC004552



**4**

**Part of Philip Lea's reprint of Christopher Saxton's map England and Wales, c.1685-88, University of Bristol Special Collections**

Reference: SC004763



**5**

**Section of James Millerd's view of 'The City of Bristoll', 1673, University of Bristol Special Collections**

Reference: SC004731



**6**

**Engraving of a map of 'Brightstowe' (Bristol) drawn in 1568 by William Smith (c.1550-1618) and first published in 1581 in volume III of 'Civitates orbis terrarum' by Georg Braun and Frans Hogenberg, University of Bristol Special Collections**

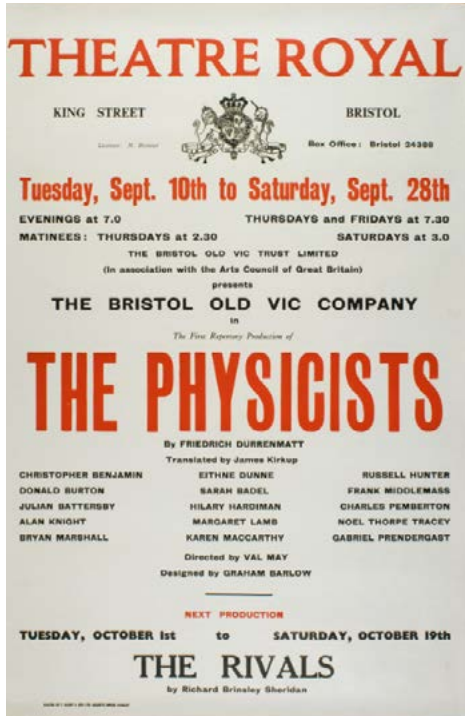
Reference: SC005274



7

Watercolour drawing by C.J. Hansom for the University College Bristol building, which was not built to this design. C1880s, University of Bristol Special Collections, DM506/65

Reference: SC000617



8

Poster for The Physicists, Bristol Old Vic Company, Theatre Royal Bristol, 10th September 1963. The Physicists, a comedy in two acts by Swiss writer Friedrich Dürrenmatt (1962), addresses the ethical dilemma that arises when unscrupulous politicians gain access to scientific and nuclear knowledge and technology that has the potential to destroy the world. Bristol Old Vic Company Archive, University of Bristol Theatre Collection.

Reference: BOV/4/3/2/119



9

Spring Season poster for the Bristol Old Vic Company, at the Theatre Royal, Bristol, c.1956. Bristol Old Vic Company Archive, University of Bristol Theatre Collection.

Reference: BOV/4/3/1/1



10

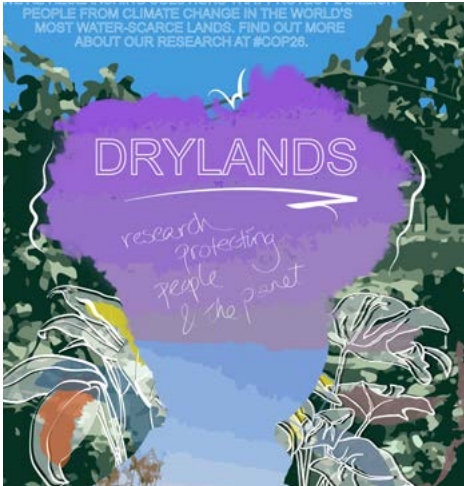
Dear Bristol: Vanessa

Vanessa Kisuule, poet in residence for the new Temple Quarter Enterprise Campus (TQEC). As part of her residency Vanessa Kisuule devised a letters project with four other collaborators which explored some of the key issues and opportunities in Bristol, including accessibility, education and belonging. Each of the five letters received a written response from a member of staff at the University of Bristol.

[www.bristol.ac.uk/temple-quarter-campus](http://www.bristol.ac.uk/temple-quarter-campus)



## About Special Collections



11

Posters commissioned by the Cabot Institute for the Environment and created by artist Emma Blake Morsi in the lead up to COP26.

**Drylands** - design depicting drylands and research into solutions to protect people from water scarcity



12

**Glacial Flour** - design showing the potential of nature as food through research which turns sediments from melting glaciers into slow-release fertiliser for sustainable agriculture

[www.bristol.ac.uk/cabot/](http://www.bristol.ac.uk/cabot/)

Special Collections comprises a rich and diverse range of printed books, journals, maps, artwork, photographs, archival resources and artefacts, dating from the 11th century to the present day. Their collections support the academic work of the University and the wider scholarly community.

Highlights of the collections include the Penguin Archive, political collections, manuscripts relating to the West Indies and slavery, the Feminist Archive South, the Brunel Collection (which can be consulted at the Brunel Institute, a collaborative venture of the University of Bristol and the SS Great Britain Trust), art, architecture, early science, medicine, music, literature, religion, philosophy, cartography, the history of the University and the city - as well as, for example, the ALSPAC (Children of the 90s), Wildfilm and the Historical Photographs of China archives.

The Special Collections 'Online Archive Catalogue' contains descriptions of many of their archive collections, both at collection level and down to a more detailed level. Use 'Library Search' for their extensive holdings of old, rare and fragile books and manuscripts.

### Visiting Special Collections:

Special Collections welcome students, members of academic staff and independent researchers to visit their Reading Room, by appointment.

Special Collections is located in the Arts and Social Sciences Library, Tyndall Avenue, Bristol BS8 1TJ.

### Details at:

[www.bristol.ac.uk/library/special-collections/](http://www.bristol.ac.uk/library/special-collections/)

Online Archive Catalogue:  
<https://archives.bristol.ac.uk/>

Library Search:  
[www.bristol.ac.uk/library](http://www.bristol.ac.uk/library)

Contact Special Collections:  
[special-collections@bristol.ac.uk](mailto:special-collections@bristol.ac.uk)



Special Collections

## About the Theatre Collection

The Theatre Collection was founded in 1951 as a research resource for the Drama Department, which had opened in 1947 as the first UK university drama department. Since then, the Theatre Collection has grown to become one of the world's leading collections relating to British theatre and live art. It comprises over 140 named collections and archives, including that of actors and collectors Raymond Mander and Joe Mitchenson. The Theatre Collection also holds artworks, audio visual material, costumes, props, designs, stage plans, set models, playbills and programmes of this most ephemeral of art forms. The collections are particularly strong from the late 18th century onwards and provide a unique insight into theatre and live art, their creative processes and broader cultural contexts. The Theatre Collection's holistic approach to collecting across archives and objects, and the interconnectedness between the collections, make it an outstanding research resource.

The development of their collections has been dependent on the generosity of others, with a large proportion of the holdings coming from donations and bequests from enthusiasts and professionals who share the desire to preserve a record of theatre and live art in Britain. The Theatre Collection has achieved both Accredited Museum and Accredited Archive Service status, and its collections have been Designated Outstanding by the Arts Council, England.

### Visiting the Theatre Collection:

The Theatre Collection is open to everyone, and entrance is free.

They are open Tuesday – Friday,  
09:30-17:00

They have a small exhibition area, a reference library and two reading rooms in which archive materials can be consulted. If you would like to visit the Theatre Collection to consult material, we recommend that you contact them in the first instance, as some of their holdings are stored off-site and may take longer to retrieve.

Address: University of Bristol Theatre Collection, Faculty of Arts, Vandyck Building, 21 Park Row, Bristol, BS1 5LT

To make an enquiry please email:  
[theatre-collection@bristol.ac.uk](mailto:theatre-collection@bristol.ac.uk) or  
call: 0117 331 5045

Please visit our website for information on our holdings, projects, exhibitions and more, and to consult our online catalogue:  
[www.bristol.ac.uk/theatre-collection](http://www.bristol.ac.uk/theatre-collection)



Special Collections



## Public Art at the University of Bristol

The University of Bristol has a growing collection of Public Art through which it seeks to work and engage more closely with communities and partners across the city of Bristol. There are seven public art sites within a short walking distance from Principal's House, more details on these can be viewed on this webpage: [public-art.bristol.ac.uk](http://public-art.bristol.ac.uk)

More information about the University's various collections can be viewed on its Centre for Cultural Collections webpage:  
[bristol.ac.uk/library/cultural-collections](http://bristol.ac.uk/library/cultural-collections)



Public art

Principal's House  
1 University Walk  
Clifton, Bristol  
BS8 1TF